



PRE-PREP HANDBOOK



2019 - 2020

Pre-Prep Values Tree



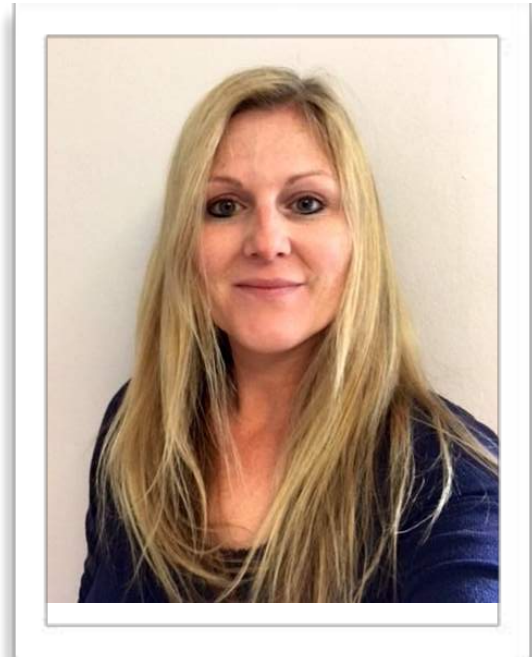
Kindness • Respect • Independence • Collaboration • Courage • Curiosity

Welcome to St Hugh's Pre-Prep

Our aim is to provide an excellent start to your child's education. We believe that nurturing a love of reading and an enthusiasm for learning will establish the firm foundations necessary for future success.

In Pre-Prep we provide small classes within a caring and friendly environment in which every child is encouraged to reach their potential and each achievement is recognised. The curriculum is broad and teaching is tailored to meet the needs of the children: academic work and creative play are both central to the early years' development. We encourage children to have confidence in themselves and a curiosity about their world.

We teach the children to build their "learning power". Your child will be encouraged to develop their determination, curiosity, creativity, adaptability, collaboration, strategic thinking and making links across their learning. We help each child to develop and apply these skills so that, ultimately, they will become well-rounded and resilient, life-long learners.



We have high expectations of behaviour and children are taught to be kind, honest and considerate of others. We prepare each child to meet the exciting challenges of every new stage through Pre-Prep, Middle School and beyond.

We look forward to welcoming you into Pre-Prep and to working with you as your child begins this exciting journey. We hope you will have a long and happy association with St Hugh's.

Mrs Jess Blythe
Head of Pre-Prep

We understand that making the transition to a new school or stage of education can be a little daunting, so the aim of this handbook is to answer the questions that you may have about Pre-Prep and to put your mind at rest.

If your child is joining Reception they will be invited to the Teddy Bear's Picnic, which provides the opportunity for the children to meet the teachers and their future classmates ahead of the start of the new term. You will also be invited to a parents' evening at which the Head of Pre-Prep and the Reception Teachers will explain the Pre-Prep routines, procedures and curriculum and answer any queries.



If your child is joining Year 1 or 2, they will be invited to join us for a day to get to know their new classmates before they start. You will be invited to the Year Group Curriculum Briefing and drinks evening where you will meet the teachers and also other parents.

We will do our very best to ensure that you are fully informed of our routines and answer any questions you may have. The FOSH (Friends of St Hugh's) Form Representative will invite you to social events, too, so that you meet the parents of the children in your child's year group.

We hope that this handbook proves useful but please do not hesitate to contact us if you have any concerns at all.

Before Starting School

Before starting school, it is most helpful if children can carry out the following basic tasks:

- To dress and undress without help
- To go to the lavatory without help and attend to their own needs
- To wash their hands thoroughly
- To blow their nose
- To hold and use a knife and fork correctly



Please encourage your child to be as independent as possible with these tasks as this will increase their confidence about starting school.

Children starting in Reception will range in age from barely 4 years to nearly 5 years old. Each child will arrive at St Hugh's with a different set of skills and at a different developmental stage – some will be able to write their letters whilst others may not yet have shown much interest. Please don't worry about this as we expect children to have a wide range of differing skills and abilities.

Classes

There are six classes in Pre-Prep. The names of the classes relate to the year group. All ages are taken from 1st September with Reception classes being for children of 4+, Year 1 consisting of 5+ and Year 2 6+. All classes are identified by the initials of their teacher, for example RLB is a Reception form taught by Miss Lisa Botsford. Classes such as ICT, French, Forest School, PE and Music are taught by specialist teachers. We also have experienced teaching assistants within Pre-Prep who support the work of the class teachers.

All classes are of mixed ability and gender with the average age being roughly the same. There are two classes in each year group and these are mixed every year to refresh the cohort and give pupils the chance to extend their friendship group.

Independence

Children should be encouraged to hang up their blazer on their peg and to sort out their things before entering the classroom – a quick goodbye to you at the door will lead to a growing self-confidence and sense of independence.

Security

It is essential for safety that your children are delivered into the care of a member of staff at the beginning of each day.

When collecting your child please wait outside the classroom in the cloakroom area.

At the start of each academic year we will ask parents to complete a form to inform us of all the adults to whom you give permission to collect your child.



Uniform

A comprehensive uniform list is to be found at the back of this handbook.

Please label all clothing, including underwear and footwear, so that items can be found quickly and returned easily.

The School Day

We like children to be settled in their classroom by 8:30am for registration. Staff will take responsibility for the children in Pre-Prep from 8:25am. We run “Larks” from 8:00am until 8:25am: this is a supervised quiet session held in the Pre-Prep library each morning. There is no charge for this session. If you require a place in Larks for your child, please book a space by emailing blythej@st-hughs.co.uk by 4pm on the Friday of the preceding week.

Timetables are published on the St Hugh’s website for your interest.

Reception children are welcome to attend full-time school, but there is an option, during the autumn term, for them to go home at 12:30pm each Wednesday afternoon; a letter will be sent requiring a commitment for each half term. In the spring and summer terms the Reception children stay for five full days.



School finishes at 3.30pm when the children should be collected from their classroom. To encourage the children to be aware of and to take responsibility for their belongings and their environment, they will be asked to collect and carry their own blazers, bags, etc and to leave the cloakroom tidy. **Please remember that if someone other than you is collecting your child, it is extremely important that you notify the class teacher.**

For the safety of your child and others, it is important to ensure that normal school rules are observed while you and your child are on the premises, whether inside the school buildings or outside in the play area and most particularly when crossing the car parks.

The woodland bordering the play area and the Pre-Prep playhouse are out of bounds before and after the school day. If children play on the outside apparatus after school, parents must supervise them at all times, please.

Dogs brought into school should be kept on a lead at all times, please, and any fouling on the school premises should be dealt with promptly. For hygiene reasons, dogs are not allowed inside the Pre-Prep building.



After-School Activities

An after-school class called “Robins” runs daily until 4:40pm each day and is held in one of the Pre-Prep classrooms or the Pre-Prep hall. It is advised that Reception children do not stay for this extra activity until after the first half of the autumn term as they are generally very tired at the end of each day during their first few weeks.

Year 2 children have the opportunity to attend a wide range of after-school activities which currently include Gardening, Outdoor Art, Zumba, Lego, Book Club, ICT and Cooking. Your child will be able to sign up for any of these options at the start of each term which run from 3:30pm until 4:15pm. There is no charge for these clubs.

Judo is available for Year 2 and tennis for Year 1 and Year 2. Again these clubs run from 3:30pm until 4:15pm and there is a charge for these two activities.

Children may also be booked into “Owls” a supervised session in the Pre-Prep Library which runs from 4:40pm until 5:30pm and coincides with the end of Upper and Middle School lessons. A drink and snack and quiet activities will be provided for the children at this time. Bookings for “Owls” are required by emailing blythej@st-hughs.co.uk by 4pm on the Friday of the week before the session. After 3.30pm parents may ring 01367 817908, to speak with a member of staff concerning after-school arrangements.

Absence from School

If your child is absent, please telephone the school (01367 870700) before 8.30am on that day explaining the reason for the absence. The school is bound by government regulations concerning school registers and every unauthorised absence has to be recorded.



If a child is absent and we have not received any indication from you as to why they are not in school, we will need to contact you by telephone during the morning to check. A letter to the Head of Pre-Prep is expected if a prolonged absence is required.

If your child arrives after 8:40am, when registers are closed, please inform the School Receptionist that your child is in school so that the record can be updated.

Behaviour for Learning

We have high expectations of all children which are maintained by a system of praise and reward for good behaviour and learning. Within each class stickers are awarded regularly for achievement, acts of kindness and citizenship or for overcoming a challenge. Each Friday assembly features children who are awarded a gold badge for particular success.

The St Hugh's Values are:

Kindness

Respect

Independence

Collaboration

Curiosity

Courage



We expect the children to show kindness and respect for one another and the adults in the department. Good manners and politeness are also expected.

Circle Time is used weekly to foster self-esteem and to reinforce the Pre-Prep Values. Topics such as 'Choices and Consequences' and 'Personal Power' are discussed sensitively, so that children learn to accept the concepts of individual responsibility and morality.

A weekly session of Golden Time is held during which children can choose their favourite activity as an incentive and reward for observing the Pre-Prep Values.

Houses

All children in the school belong to a House: Bickley (Blue), Chislehurst (Green), Malvern (Red) or Carswell (Yellow). The Houses have been named after the different locations of St Hugh's. Children receive House points for good behaviour, not only for themselves, but for their House as well.



Points are counted weekly and the House Cup is presented in the Pre-Prep Assembly.

The Houses compete against each other at the end of every term and at the annual Sports Afternoon.

Captains and Vice-Captains are chosen from Year 2 each term. All the children are given the opportunity to experience this responsibility.

Home School Liaison

We are keen that the dialogue between home and school is as open as possible. We ask that parents draw our attention to any questions or problems that they may have straight away. Class teachers are best approached at the end of the school day, as first thing in the morning they are naturally engaged with the needs of the children. Mrs Blythe is always happy to talk, meet or email with parents to address issues as they arise.

The school website: www.st-hughs.co.uk provides a wealth of information about the school. The school calendar, news and contact details are all easily accessible here.

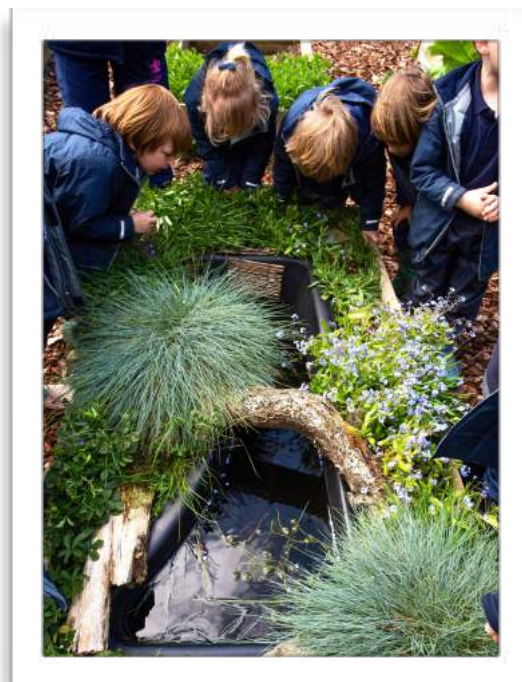
The school calendar is published each term and contains the key dates and staff contact details for your reference: this is also published and regularly updated on the website.

A colour newsletter is produced termly. This publication features many photographs of Pre-Prep activities and gives a flavour of school life from Nursery to Year 8.

The St Hugh's Weekly News is sent out to parents via email each Friday: there is a Pre-Prep section which often contains whole department updates and reminders.

The teachers of each year group also send out a weekly newsletter. These provide information on forthcoming activities and events as well as keeping you informed about the themes of the week's lessons.

The Home/School Diary is a useful means of communication for both parents and teachers. Information about daily events, for example changes in end-of-day collection, very minor injuries and a record of reading books are all recorded here.



Children have book bags in which to transport reading books and their Home/School Diary. It is important that children quickly learn to bring these bags to and from school daily. It would be most helpful if you would check the contents each day.

Curriculum planning is shared with parents in a number of ways: there are annual curriculum briefing sessions, information is given in the year group newsletters and further information is published via the EYFS parent portal and on the St Hugh's website.

Reporting & Monitoring

At the end of the autumn and summer terms you will receive a full written report which will explain your child's progress in the key areas of learning.

During the course of the academic year you will be invited to attend two parents' evenings, which will provide the opportunity to discuss your child's progress and development with the class teacher.

However if you would like to discuss their progress at any other time, please do not hesitate to ask for an appointment with your child's class teacher or Mrs Blythe.

Open Afternoons

Open Afternoons are an opportunity for your child to show you their classroom and all the work that they have completed. These events, which are held from 3:00pm until 3:30pm, usually fall just before the half term holiday, with dates being confirmed in the school calendar.

Reception Children's Records

Records are kept of each Reception child's development and progress and are displayed on the Tapestry system which provides a personal portal for parents to access the photographs and comments about their child. Parents are sent personalised access details and are encouraged to log on to the portal when it is opened and over the holidays.

Parents receive a written report at the end of the summer term which includes an explanation of their child's learning profile.



School Policies

The following policies are available on the St Hugh's website or from the school office:

- Accessibility Plan
- Admissions Policy
- Anti-Bullying Policy
- Assessment Policy
- Behaviour for Learning Policy
- Complaints Procedure
- Curriculum Policy
- EAL Policy (English as an Additional Language)
- E-Safety Policy
- Exclusion Policy
- EYFS Policy
- Equal Opportunities Policy
- First Aid Policy
- Health & Safety Policy
- Recruitment Policy
- Safeguarding Policy
- Safety and Supervision on Visits Policy
- SEND Policy (Special Educational Needs and Disability)
- Whistle-Blowing Policy

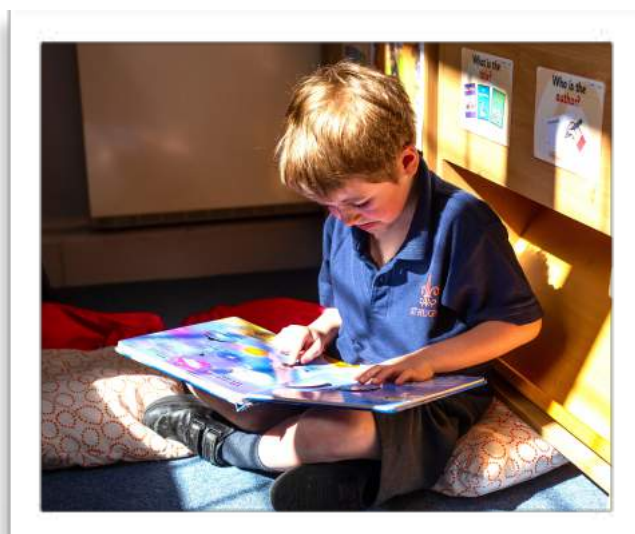


CURRICULUM

Reading

We want your child to make a great start in their reading. We would like them to become independent readers but, more than that, we want your child to love reading!

The process of helping your child to learn to read is a partnership and your involvement is invaluable and essential for success.



Reading is taught in a variety of ways. Children follow a systemic programme to learn phonics. They have numerous opportunities to access a wide variety of genres as a stimulus for learning across the curriculum and beyond.

Your child will bring home an enormous selection of books to share with you which will provide lots of opportunities to talk about the text. Sometimes the books are for your child to read using their phonic knowledge: other books will inevitably contain more challenging vocabulary which will enrich their experience of language and are for you to read together.

Once your child is reading fluently and confidently, they will move on to a wonderful selection of books which are part of the Accelerated Reader system. We will carefully assess your child to ascertain the range of books that are suitable for their particular comprehension level. As your child finishes a book they will undertake a quiz which encourages them to think about grammar, word meanings and the story content in order to encourage in-depth comprehension. The quizzes are completed on a tablet and your child will accumulate scores; the system is very popular and extremely motivating. Accelerated Reader continues well beyond Pre-Prep.

Reception

In Reception all children work towards the Early Years Learning Goals:

The Prime Areas:

- Communication and Language: listening & attention; understanding; speaking
- Physical development: moving and handling; health and self-care
- Personal, Social & Emotional Development: making relationships, self-confidence and self-awareness; managing feelings and behaviour;

The Specific Areas:

- Literacy: reading & writing
- Mathematics: numbers, shape, space & measure



- Understanding the World: people and communities; the world; technology
- Expressive Arts & Design: exploring and using media & materials; being imaginative

The children have many opportunities to learn and practise their skills through a broad range of teacher-led and child-initiated activities, structured and unstructured play and exploration. The aim is to inspire the children with a sense of curiosity about their world and encourage a growing bank of skills with which to express themselves. The children are taught to be resilient if they encounter difficulties, to build links between ideas and develop strategies for learning .

The Reception curriculum is topic based and builds on the children's own experiences.

Years 1 & 2

The Curriculum in Years 1 and 2 is a rich and varied mix of a wide range of subjects.

English

A multi-stranded approach is used to teach children to read and write: a phonic programme ensures that every child knows how to build and decode words effectively: children are grouped by their stage of phonic awareness and teaching is tailored to suit their needs.

Throughout the curriculum, books are shared and enjoyed and a love of language is nurtured.

Punctuation, grammar and comprehension skills are taught to ensure that your child is given a secure foundation for literacy. Creative writing is inspired by a wide range of stimuli and is usually topic-related.

Children are encouraged to be confident and effective communicators. Activities allow them opportunities to hone their skills in speaking and listening to one another, to adults and to a wider audience.

Reading with confidence and enthusiasm is the key to lifelong learning: this is fundamental to your child's education. Once they are able to decode phonics effectively, your child will choose their own reading book which is at a level to challenge and improve their reading: this text is read at school and is taken home daily.



We ask that you hear your child read their school book every day and that you regularly enjoy more challenging texts together: the bedtime sharing of a story is a magical experience and helps to nurture a love of language. It is important for every child to establish a good routine in managing their reading for pleasure and your help with this is extremely valuable.

We teach a cursive script from Reception, so that as the children become more confident and accurate in their letter formation, they join their handwriting quite naturally.

Maths

Maths is based on the Abacus Evolve scheme and lessons are differentiated appropriately for the children. The scheme is supplemented by a huge amount of practical and mental activities to develop and consolidate understanding. Practical activities are used frequently to help children to appreciate number, shape and space, measure and data handling: application of this knowledge is then encouraged to demonstrate a true understanding of the concepts.

Children are encouraged to participate in the Abacus Active Learn at home. This program is tailored to the children's level, is based on their school work and progresses incrementally to support and challenge their learning.

Topic Work

Topic work is truly cross curricular. Titles as diverse as 'Pole to Pole' and 'Roots, Bugs and Welly Boots' provide a multitude of practical and academic experiences which inspire a love of learning.

Science elements encourage children to ask questions about how things work, undertake open-ended investigations and participate in discussions.



Life in the past is compared with the children's own experiences and key historical figures are investigated.

World and local geography is explored.

All teaching helps individuals to develop important skills and initiate a curiosity about the world.

Throughout Pre-Prep

French

French lessons are lively and animated with singing and games which provide the foundations for a basic vocabulary and an enthusiasm for learning languages.

ICT

ICT lessons, taught in a dedicated ICT suite, are very practical sessions aimed at developing confidence and dexterity in ICT through cross curricular work.

Interactive Proboards, iPads and PCs are used in lessons to enrich the children's learning. We employ strong filters, use only educational programs and insist that the children are safe and discerning in their use of the internet.

Music and Drama

Music is enjoyed in many lessons throughout Pre-Prep and is also taught by a specialist teacher as a separate subject. In addition, in Year 2 pupils are given the opportunity to sing in the Pre-Prep Choir during the weekly club. Many children in Year 2 begin to take individual music lessons and learn a wide range of instruments.

All children sing and perform in the Christmas production and there are musical assemblies once a term that parents are most welcome to attend.

Physical Education

Physical education is an essential element of the curriculum. Lessons emphasise teamwork, coordination, fitness and a healthy life-style as well as key physical skills. Children are encouraged to work together towards a common goal and begin to learn to win with grace and lose with dignity. In addition to our PE lessons, all children in Pre-Prep have a weekly swimming lesson.



In Years 1 and 2, a weekly games session is introduced, where the children start to learn skills that underpin rugby, hockey, cricket and football for boys and netball, hockey, cricket and rounders for girls. A mouthguard and shin pads will be needed for rugby and hockey. All other equipment will be supplied. In Year 2 rugby / football boots are recommended for boys but are not essential.

You will have the opportunity to observe your child's progress at the annual Pre-Prep Sports Exhibition, Swimming Gala and Sports Afternoon.

Wellbeing

Every child from Nursery to Year 8 participates in half termly wellbeing sessions during which they learn to recognise their emotions and regulate their feelings. Mindfulness, breathing techniques, affirmation and visualisation are taught alongside yoga movements to create a sense of calm and positive thought.

We help the children to use their knowledge and understanding of positive mental health to benefit their relationships and learning. These techniques learned are transferred into Pre-Prep daily life. Alongside these structured wellbeing sessions, the children participate in different pastoral groups, circle time discussions and the school nurses are regular visitors to the Pre-Prep department and are always on hand to promote children's emotional health and wellbeing.

Learning Support

There are always some children who require a little extra help with their learning in the short or longer term. Children in Pre-Prep may receive extra tuition individually or in a very small group from experienced staff. There is no charge for this service.

Forest School and Outdoor Learning

The school site provides a wealth of opportunity for outdoor learning. Twice each day the children play in the extensive Pre-Prep grounds – the uniform has been designed for all weathers!



Forest School aims to encourage and inspire children through positive outdoor experiences: it has been proven to be hugely successful.

The Pre-Prep children visit one of our on-site, designated Forest School areas regularly to enjoy the beautiful woodland and learn about the natural environment.

The children are taught to handle risks, to use their own initiative, to solve problems and to co-operate with others. Many sessions are based on the year group topics and introduce or reinforce key curriculum skills.

Each class has its own vegetable patch and the children plant seeds, tend to and harvest their crops. Much of the produce is taken to the kitchens and incorporated into the lunch for that day.

We hold an annual Outdoor Adventure Day, during which the children work in their Houses on a variety of outdoor tasks which challenge their thinking and encourage collaborative work.

Library

Each week your child will have the opportunity to visit our library and choose two books (one fiction and one non-fiction) which they can bring home and share with you.

FOSH (Friends of St Hugh's) & Social Events

FOSH (Friends of St Hugh's) supports the life of St Hugh's and assists families in getting to know each other. FOSH also raises money through social fund-raising events to support an annually chosen local children's charity and to buy items for the school, the ideas for which usually come from the children through the School Councils.

Each year group has two FOSH Representatives who coordinate regular get-togethers across the year group giving parents and children the opportunity to meet. Each representative also sits on the FOSH committee, which meets several times during the year and arranges larger whole-school events, such as the annual Fireworks and Summer Fair.



The work of FOSH is hugely important to school life and is much appreciated by all. New reps are recruited each year and current reps are always delighted to hear from those who would like to be involved, either as a rep or to support an event.

Food

At the beginning of the academic year children are able to opt for a drink of milk each morning. All children receive a mid-morning snack, a cooked lunch and a mid-afternoon snack. Fresh drinking water is always available in the children's water bottles.

Lunch is eaten in the Orangery. Each table is served and managed by an adult. The place settings are made up of children in EYFS or Key Stage 1: this affords the children an opportunity to socialise in year groups. Children are expected to eat politely and to use their cutlery correctly. To encourage good behaviour, each day one table is rewarded with a star.

If your child has any food allergies or intolerances, please inform the Nurses in the Medical Centre in writing and ensure that the class teacher is aware. The catering chef will then provide appropriate meals.

Owing to the increasing number of children who experience allergies, we do not allow nuts in school. When birthday cakes are brought into school, we ask that parents provide a list of ingredients used. Before bringing cakes to the form rooms, this list, along with the cake, should be taken to the Day Room to check, please, in order to ensure the cake does not contain items to which a child may be allergic.



Medicines

When children are ill, they are much better off at home, not only to reduce the infection of others but clearly no child can do their best when they are feeling poorly. If your child has been ill during the night, has a high temperature or has experienced vomiting or diarrhoea, please keep them at home the following day. (The school policy is 48 hours after the last episode of diarrhoea and vomiting).

If your child is fit enough for school but needs to continue medication, please speak to one of the school nurses who will be happy to administer the dose at lunchtime. Please make sure medicines are in the original packaging, or as prescribed, with clear directions.

Long term medication or monitoring, such as for asthma or diabetes, should be discussed with one of the nurses. A medical form is completed as part of the admissions process but it is essential to report any changes regarding health issues.

Parking

Pre-Prep parents are welcome to park on the netball courts beside Pre-Prep before and after school. However, these may not be available for parking during occasional afternoon collection times when they are being used for Games Clubs. On these occasions please park in front of the Manor House or on the car parking area on the right of the main entrance by the sports pavilion.



Problems or Concerns

There is a possibility that, from time to time, your child may have difficulties and if this occurs a member of staff will contact you immediately to discuss the situation.

Our aim is to ensure all children settle happily and quickly into the daily routine of school. However, if you have any worries or concerns, please do not hesitate to contact the class teacher in the first instance. Mrs Blythe and Mr Thompson are also always very happy to discuss any issue with you.

A very warm welcome awaits you at St Hugh's

UNIFORM LISTS

Blazer to be worn to and from school each day.

WINTER

Boys

- * Regulation terracotta blazer
- * Regulation navy jumper (with crest)
- Grey shorts (or long grey trousers in winter months)
- * Regulation navy polo shirt
- Grey socks
- ** Black shoes with velcro-fastening (no slip-on shoes, please)
- * Navy Art smock (with loop)

Girls

- * Regulation terracotta blazer
- * Regulation navy cardigan (with crest)
- * Regulation tartan pinafore
- * Regulation white round-collar blouse
- Navy socks/tights
- ** Black shoes with velcro-fastening (no slip-on shoes, please)
- * Navy Art smock (with loop)
- Navy hair accessories

Boys and Girls

- * Regulation navy book bag
- Named water bottle

PE & GAMES KIT

Boys and Girls

All items labelled on front left of garment for easy recognition.

- * Regulation navy track suit (Please sew in loops for ease of hanging on pegs)
- * Regulation white PE polo shirt (with crest)
- * Regulation navy base layer top
- * Regulation navy base layer leggings
- White PE shorts
- Regulation House t-shirt (available from School Receptionists)
- White ankle socks
- * Regulation knee-length navy and pink sports socks - Year 1 and Year 2 only
- Shin pads - Year 1 and Year 2 only
- Gum Shield - Year 2 only
- Navy drawstring kit bag
- ** Velcro fastened trainers (with non-marking soles)

OUTDOOR AND PLAY TIME KIT

Boys and Girls

- * Regulation navy anorak (with crest)
- Waterproof navy trousers (salopette style recommended)
- Wellington boots



- * Regulation navy hat and scarf
- Navy or plain coloured gloves or mittens (Years 1 and 2)
- Navy or plain coloured mittens (Reception)

SUMMER

Boys

- * Regulation Terracotta Blazer
- * Regulation navy jumper (with crest)
- * Regulation navy sleeveless jumper (with crest)(optional)
- Grey shorts
- * Regulation navy polo shirt
- Grey socks
- ** Black shoes with velcro-fastening (no slip-on shoes, please)
- * Navy Art smock (with loop)

Girls

- * Regulation Terracotta Blazer
- * Regulation cardigan (with crest)
- * Regulation summer dress
- Plain navy ankle socks
- ** Black shoes with velcro-fastening (no slip on shoes, please)
- * Navy Art smock (with loop)
- Navy hair accessories

Boys & Girls

- *Regulation navy book bag
- Named water bottle

PE & GAMES KIT

Boys and Girls

All items labelled on front left of garment for easy recognition.

- * Regulation navy track suit (Please sew in loops for ease of hanging on pegs)
- * Regulation white PE polo shirt (with crest)
- * Regulation navy base layer top
- * Regulation navy base layer leggings
- White PE shorts
- Regulation House t-shirt (available from School Receptionists)
- White ankle socks
- * Regulation knee-length navy and pink sports socks - Year 1 and Year 2 only
- Shin pads - Year 1 and Year 2 only
- Gum Shield - Year 2 only
- Navy drawstring kit bag
- ** Velcro fastened trainers (with non-marking soles)

SWIMMING KIT

Boys

- Plain navy swimming trunks (not shorts)
- Towel
- Drawstring swim bag

Girls

Plain navy swimsuit, navy swim cap
(or optional navy & pink * regulation swimsuit)

Towel

Drawstring swim bag

OUTDOOR AND PLAY TIME KIT

Boys and Girls

* Regulation navy anorak (with crest)

Navy waterproof trousers (salopette style recommended)

Wellington boots

* Regulation navy sun hat

Named suncream (we recommend you apply all day suncream to your child before school)

PLEASE ENSURE ALL ITEMS OF CLOTHING ARE CLEARLY NAMED

* *Items are regulation uniform - only available from Stevensons, 245 Banbury Road, Oxford, OX2 7HN. Tel: 01865 554559. Website: www.stevensons.co.uk*

** *No laces please*





St Hugh's School, Carswell Manor, Faringdon,
Oxfordshire SN7 8PT

01367 870700 Email: office@st-hughs.co.uk
Head of Pre-Prep: Mrs Jessica Blythe 01367 870710
Email: blythej@st-hughs.co.uk